

A home away from home

Interface®



PRODUCT: Adaptations™ and Woodland Way in colorway Tupelo

A HOME AWAY FROM HOME

Senior Living providers who advocate quality of life for elderly residents know the challenges of creating a warm, home-like environment for residents and their families. This cozy aesthetic must include hassle-free products that are easy to preserve by maintenance staff. The most experienced and innovative providers look for the right balance between these needs. When it comes to flooring options for your facility, Interface Flooring Systems is here to help.

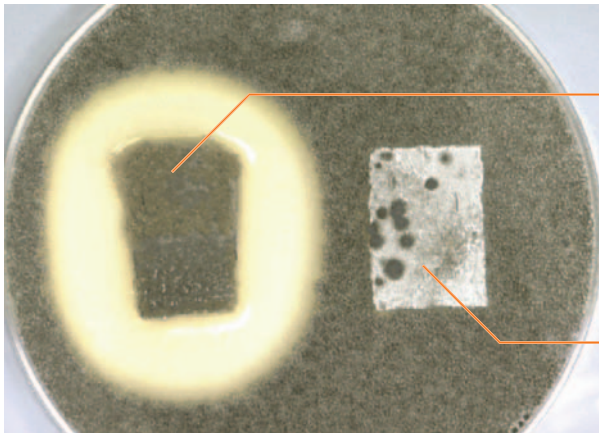
Residents and their families demand high quality service that focuses on their individual needs. They want their new home away from home to be inviting and comfortable, and the floor plays a significant role.

The floor can dictate the look and feel of a facility: soft surfaces are usually perceived as cozy while hard surfaces can create a harsh atmosphere. Also, seniors often look down, which makes the floor a viable tool for wayfinding. Avoid shiny or glaring floors to reduce temporary blindness caused by lighting on the surface, which can increase the risk of slip-and-fall injuries.

Interface modular products:

- Allow seniors the conveniences of a soft surface and provide a hassle-free solution for typical maintenance headaches like incontinence and food spills since carpet modules can be quickly cleaned or replaced.
- Meet the special needs of your residents (i.e., cushion underfoot to prevent shuffling or warm colors and patterns to offer soothing benefits and wayfinding).
- Adhere to commercial codes and regulations like ADA and AATCC.
- Contain a patented antimicrobial preservative called Intersept® in the backing, which protects carpet against the growth of mold, bacteria and other odor-causing organisms.
- Offer design flexibility and a home-like environment with a variety of organic patterns, warm colors and options to meet your budgetary needs.

The Truth About Mold Growth: Interface Modular Carpet vs. VCT



Interface Modular Carpet treated with Intersept, which protects the carpet against mold.

The Interface modular carpet on the left is treated with Intersept. Notice that the vinyl composite tile on the right does not prohibit mold growth when moisture is present.

Untreated Vinyl Composite Tile