



Antron Lumena  
Only by DuPont



PRODUCT: Nature Trails™ in colorway Buck Eye

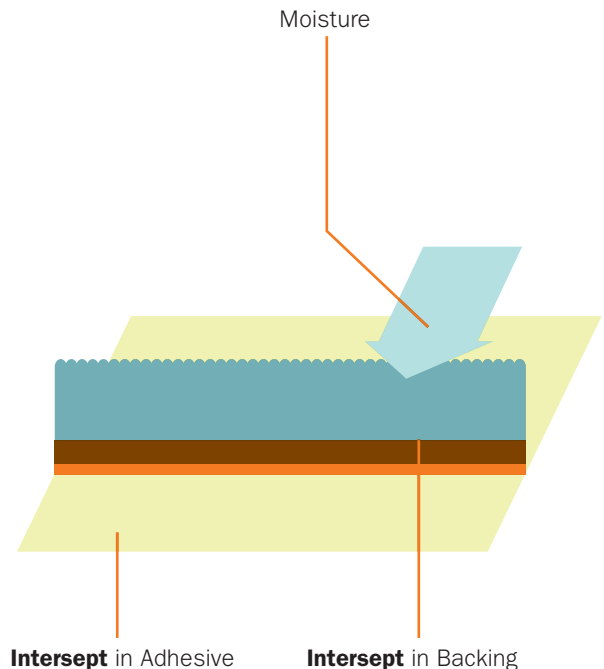
## A PRESCRIPTION FOR MOISTURE

Interface modular flooring promotes improved indoor air quality.

- Interface modular products meet the CRI Green Label and State of Washington Protocol for low volatile organic compound (VOC) emissions.
- Interface utilizes less adhesives. The dimensional stability of our backing systems allows for a spray adhesive application versus full spread.
- Interface carpet is protected with Intersept®, our patented antimicrobial preservative.

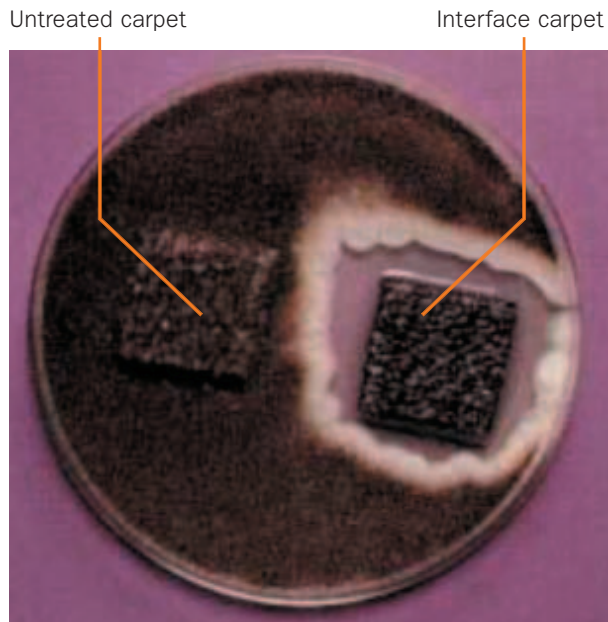
All of Interface's modular carpet products contain Intersept®, Interface's proprietary antimicrobial preservative. Intersept® is permanently incorporated into the primary backing of all Interface modular carpet products and recommended adhesives. Unlike most antimicrobial applications that are topically applied, Intersept won't wash away during standard maintenance procedures.

- Manufactured by Interface, Inc. and registered with the EPA for use in carpet, Intersept is used in carpet, air filters, polymers, adhesives and specialty coatings.
- Incorporated into the primary backing at the base of the fibers.
- Low toxicity and low water solubility (durable).
- Protects carpet against a broad spectrum of microorganisms, which may contribute to odors and staining.
- Intersept is non-volatile and will not off-gas from surfaces in which it's incorporated.

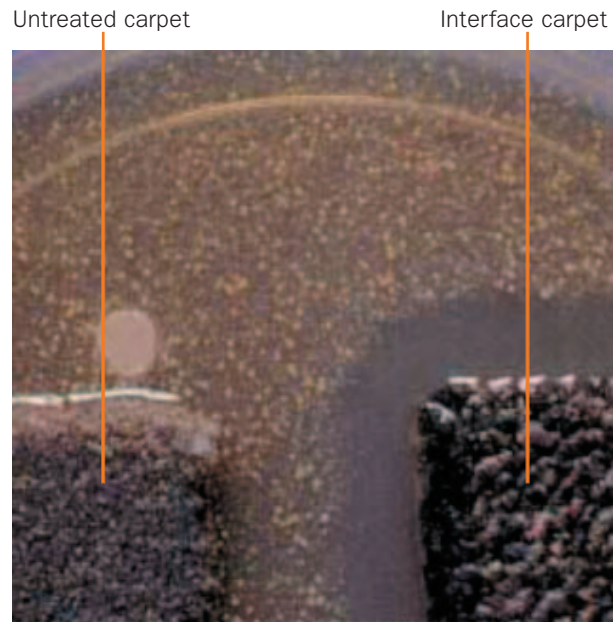


In the presence of moisture at the backing, Intersept® prevents microbial growth, odors and stains.

- Effectively protects against a broad spectrum of molds, mildew and bacteria, promoting a more hygienic flooring surface.
- Adhesives with Intersept provide additional protection and reduce the need for exorbitant removal and replacement costs when moisture penetrates the backing and substrate.



Fungi - The Interface carpet on the right is protected with Intersept. Notice the fungal contamination of the untreated carpet on the left.



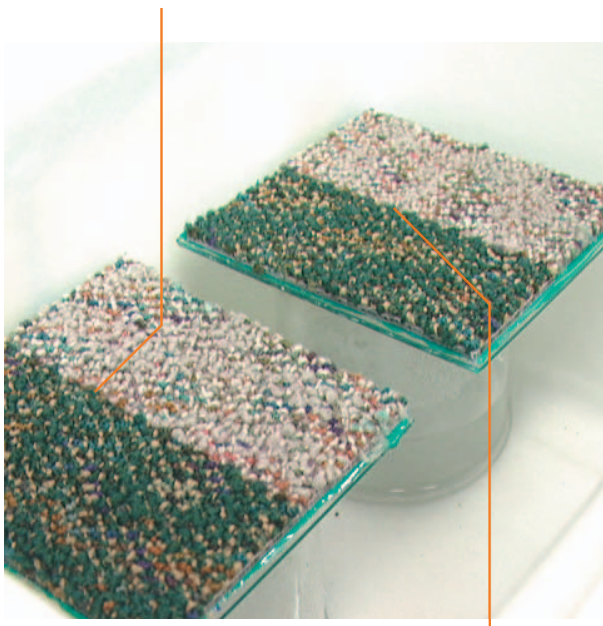
Bacteria - The Interface carpet on the right is protected with Intersept. Notice the bacterial contamination of the untreated carpet on the left.

Interface's impermeable structured design backing keeps moisture on the surface for ease of removal. Interface provides additional protection by permanently incorporating our patented antimicrobial, Intersept®, into our backing and adhesives.

- Offers spill protection that goes far beyond British Spill Test requirements for moisture-proof carpet.
- After four weeks of testing in a controlled environment, results show no bacteria or mold growth at the seams of Interface modular products.
- All tests were completed by a NVLAP (National Voluntary Laboratory Accreditation Program) accredited laboratory.

## Test:

Carpet seam bacterial challenge

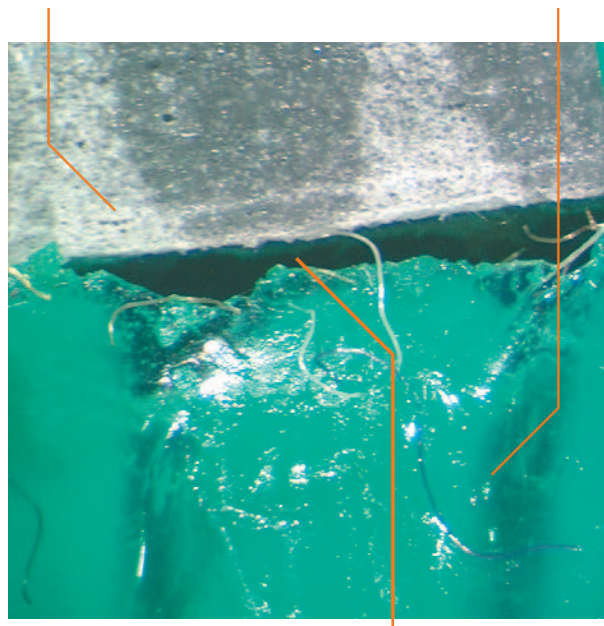


Carpet seam mold challenge

## Result:

Backing

Adhesive



No mold growth at tile seam, tile backing, or on the Re:Source Gridset 2000 Adhesive following two mold challenges and 28 days of humid exposure